



## COALFIELDS EXPRESSWAY

*From Route 23 in Wise County to  
Interstates 77 and 64 in West Virginia*

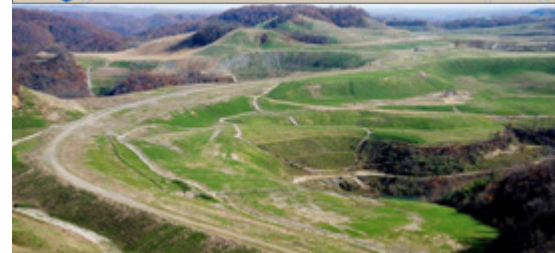
### Overview

The Coalfields Expressway, designated as U.S. Route 121, will be a series of construction projects resulting in a four-lane limited access highway through the coalfields region of southwestern Virginia. As a modern transportation artery, the expressway will replace narrow rural roads and give the region safe and efficient access to Kentucky, Tennessee and West Virginia. Interchanges along the corridor will connect the citizens of Pound, Clintwood, Clinchco, Haysi, Breaks, Grundy and Slate.

The expressway is part of the National Highway System and approved as a Congressional High Priority Corridor. When complete in Virginia, it will stretch approximately 50 miles east from Route 23 near Pound in Wise County, through Dickenson and Buchanan counties, to the West Virginia line near Slate. This new highway will improve travel, tourism and commerce in southwest Virginia.

### Coal Synergy: A Unique Funding Option

- Road building costs can be substantially reduced through coal synergy – the use of coal companies' large-scale earth-moving equipment to prepare the road bed to rough grade, while the companies recover coal reserves.
- Coal synergy allows Virginia to align the roadway with existing coal reserves owned by Contoura Energy, saving an estimated 45% of construction costs.
- In 2013, the Virginia Department of Transportation estimated construction costs of the Expressway, including interchanges and connector roads, to be \$5.1 billion using traditional construction methods. Coal synergy brought the cost down to \$2.8 billion.
- For more: [http://www.virginiadot.org/projects/bristol/route\\_121.asp](http://www.virginiadot.org/projects/bristol/route_121.asp)
- For a list of Coalfields Expressway project names and descriptions: [http://www.virginiadot.org/projects/resources/CoalfieldsExpressway/14031\\_coalfieldPrintLISTING.pdf](http://www.virginiadot.org/projects/resources/CoalfieldsExpressway/14031_coalfieldPrintLISTING.pdf)



### ***Creates jobs, boosts economy***

- Expected to be an economic lifeline for a region experiencing high unemployment
- During construction, supports more than 29,000 jobs and \$4.1 billion in economic activity
- Supports hundreds of new service jobs and more than \$41 million in annual economic activity
- Saves more than \$28 million annually in travel efficiencies
- Will be a safe, modern, and efficient highway